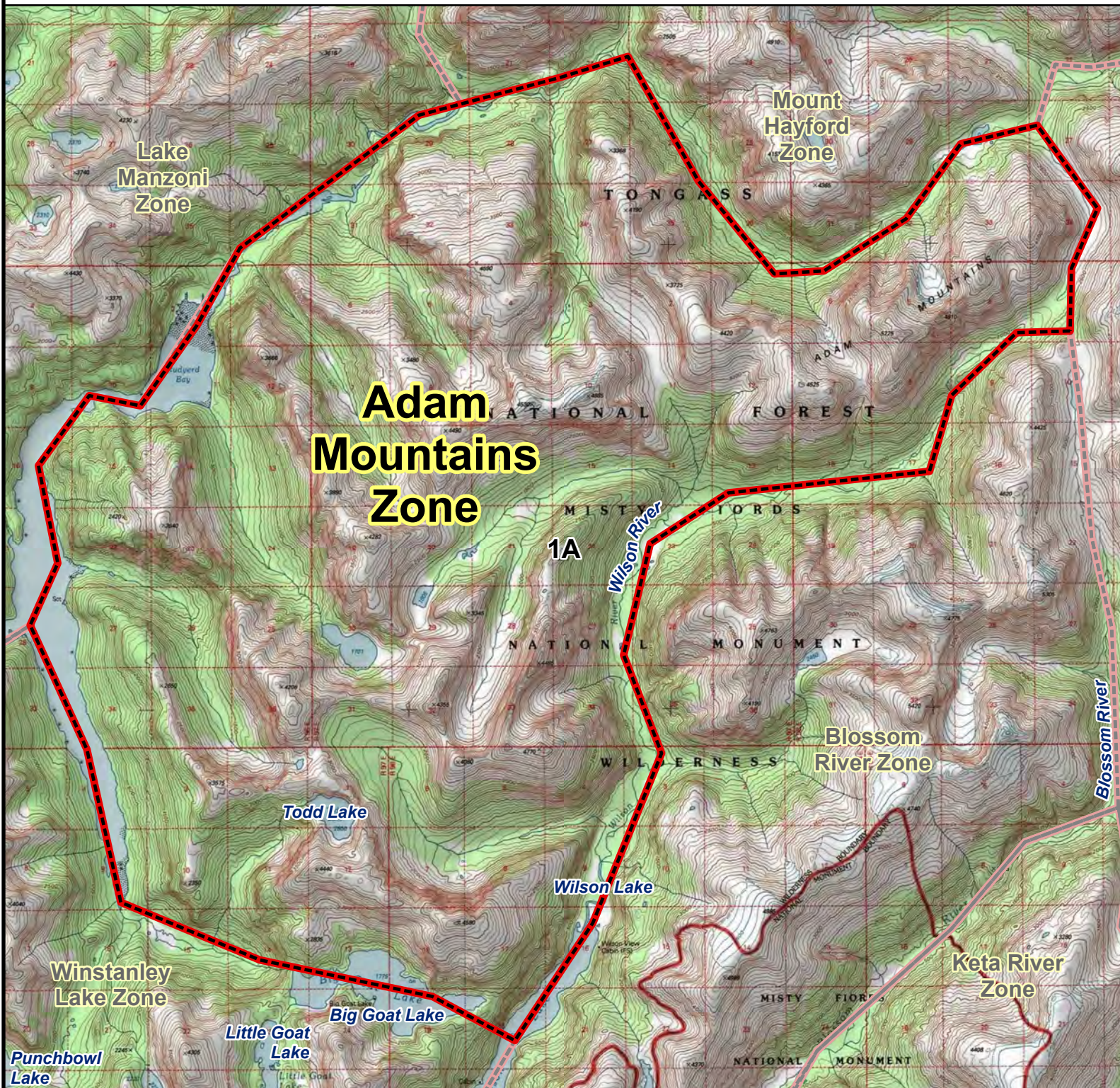


RG002 MOUNTAIN GOAT HUNT

Adam Mountains Zone



Adam Mountains Zone: Originating at the mouth of the right arm of Rudyerd Bay, north along Rudyerd Bay to the head of the bay, northeast along the drainage that flows into Rudyerd Bay, east through the valley along the Adam Mountains, south through the valley south of the unnamed lake at GPS coordinates N 55.685495, W -130.402671 to the headwaters of the Wilson River, west along the Wilson River to where it flows into Wilson Lake, south through Wilson Lake to the GPS coordinates N 55.523506, W -130.552186, northwest through Big Goat Lake to the outlet of the lake, northwest along the drainage from Big Goat Lake to the point of origin.

